

Extra Detail Kit For ALIEN NARCISSUS Studio Scale 3D Model By IMPERIALPRINTHUB



**NOTE: This detail kit contains no physical parts.
Design files are included to print decals and create 3D printed parts for the original model.**

NARCISSUS KIT AVAILABLE FROM

<https://www.etsy.com/uk/listing/1666091172/alien-narcissus-studio-scale-3d-model>

BACKGROUND

This is a fantastic kit available on Etsy and created by ImperialPrintHub. It is supplied as studio scale but can be printed smaller and still retains fantastic detail.

Using my Elegoo Saturn 4 Ultra I was able to print this model at 40% scale so each part would fit on the build plate. This gives a model of around 306mm in length so is still quite impressive.

However, there were a couple of changes I wanted to make to the supplied 3D parts and a couple of things that I needed to better display the model.

This detail pack contains 3D parts (STL files) for engine nozzles to fit inside exhaust cowls and a small insert to give the rear 'windows' the 3 pane look as seen in the film Alien when the xenomorph is ejected through the airlock.

The extra items created are a set of vector artworks for a decal sheet and a 3D part (STL file) for a stand that can be fitted to standard 1/4" camera tripods, extensions etc to display the model.

Also included are SVG files to enable you to cut acrylic window inserts for airlock and cockpit and also SVG files to cut adhesive tape masks for fitted windows for when you paint the model.

KIT CONTENTS

Digital download only containing:

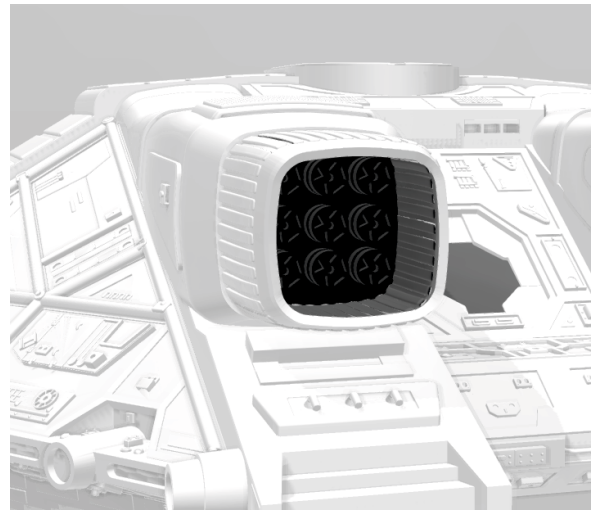
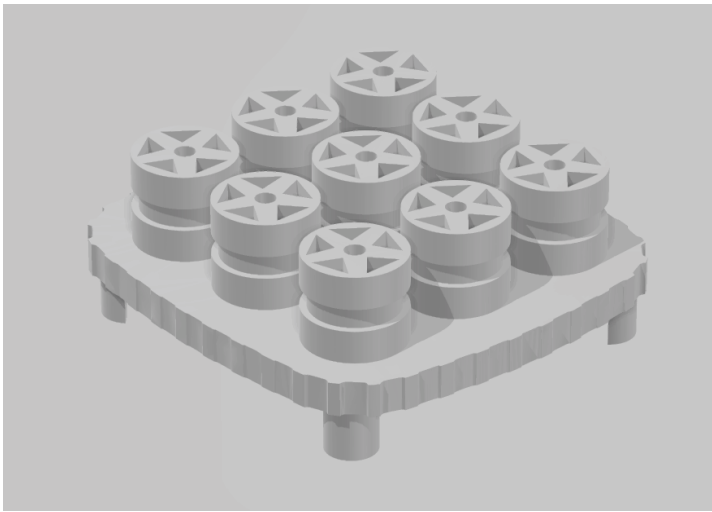
- Engine nozzles 3D part file in both original studio scale and 40% scale.
- Rear window/vent insert 3D part file in both original studio scale and 40% scale.
- Display stand 3D part file in original both studio scale and 40% scale.
- Vector decals in PDF format in both original studio scale and 40% scale.
- Set of SVG files for laser cutting windows in both original studio scale and 40% scale.
- Set of SVG files for laser cutting adhesive masks for windows in both original studio scale and 40% scale.

See the next section for details on each part.

CONTENTS DETAILS

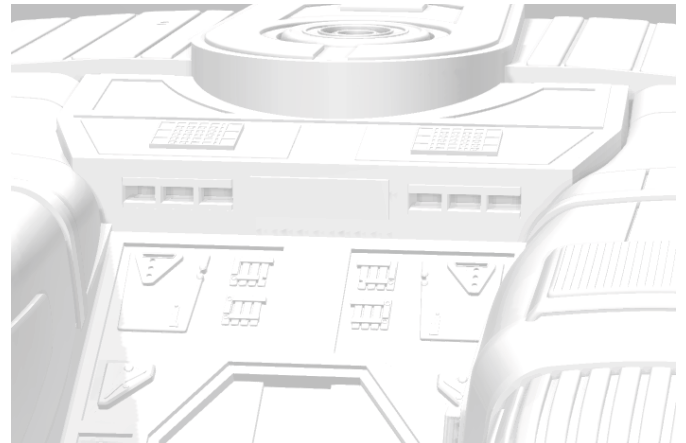
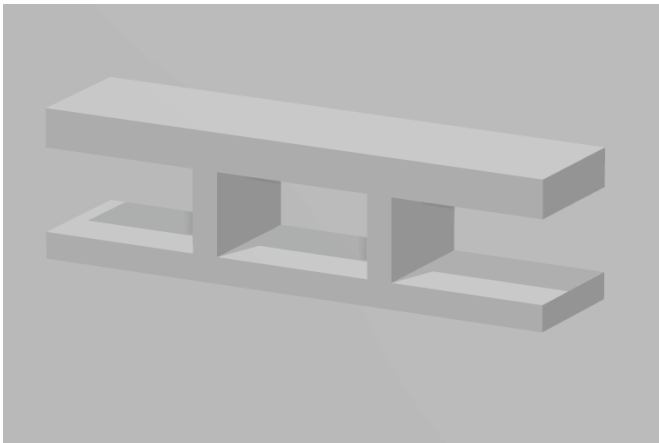
ENGINE NOZZLES

Engine nozzles 3D part files in both original studio scale and 40% scale. These are in STL format and are fitted inside engine cowls before affixing to engines.



WINDOW/VENT INSERTS

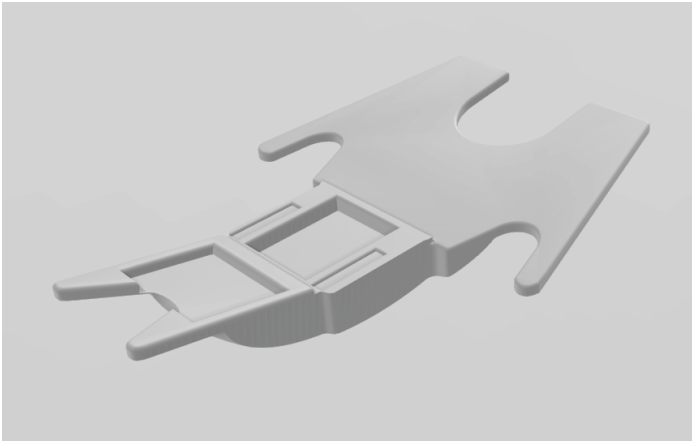
Window/vent insert 3D part files in both original studio scale and 40% scale. These are in STL format and are fitted inside the windows/vents at the rear to give the 3 pane version as seen in the film.



STAND

Stand 3D part file in original both studio scale and 40% scale. These are in STL format and designed to fit a 1/4" adaptor to provide a solid connection to standard camera tripods and extension bars etc.

The stand allows the model to simply rest on top without having to modify the original model.



Both model sizes have recess to accept a 1/4" adaptor to provide a solid support to fit to an extension rod and a suitable tripod.

A suitable adaptor is available from AliExpress:

<https://www.aliexpress.com/item/1005006385407082.html>

Choose the A6 variant.

This should be fitted to the stand (Male thread upwards) with strong super-glue or two part epoxy.



For my 40% model I selected a 150mm extension rod available from AliExpress:

<https://www.aliexpress.com/item/1005007263896991.html>



This then attaches to a tripod. A suitable one for the 40% scale model is this one from AliExpress:

<https://www.aliexpress.com/item/1005006125133491.html>

(A much larger one would be required for the studio scale model.)



Also included is a 3D part for the base cover that fits over the lower part of the 8mm diameter extension rod.

DECALS

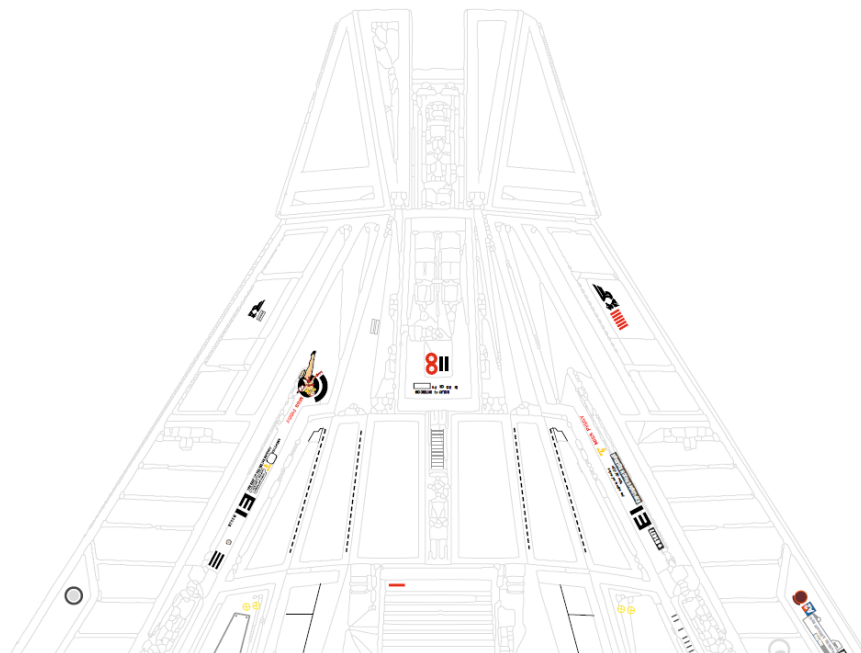
Decals are available in both 40% scale and 100% scale to suit full size studio model.

These are not readily available and the whole set has been designed from scratch. (Being in vector format these are easy to resize in a graphics package if required.)

These can be printed at home on water slide decal paper or you could use a professional service. Note that these decals do contain white where the original decals contained white but this will not appear when home printed. Seeing as the Narcissus is white itself this has minimal affect when missing the white.



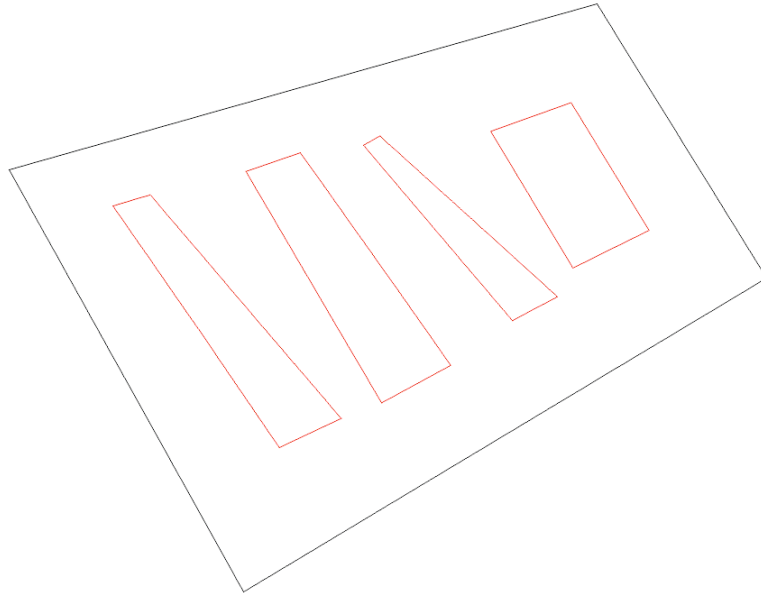
Also included is a decal placement guide in vector PDF. Again, this is not readily available anywhere else. Being vector based you can zoom right in to see exact placement.



SVG FILES FOR WINDOWS

SVG files are included in both 40% scale and original 100% studio scale to allow you to laser cut precise windows for fitting to the model.

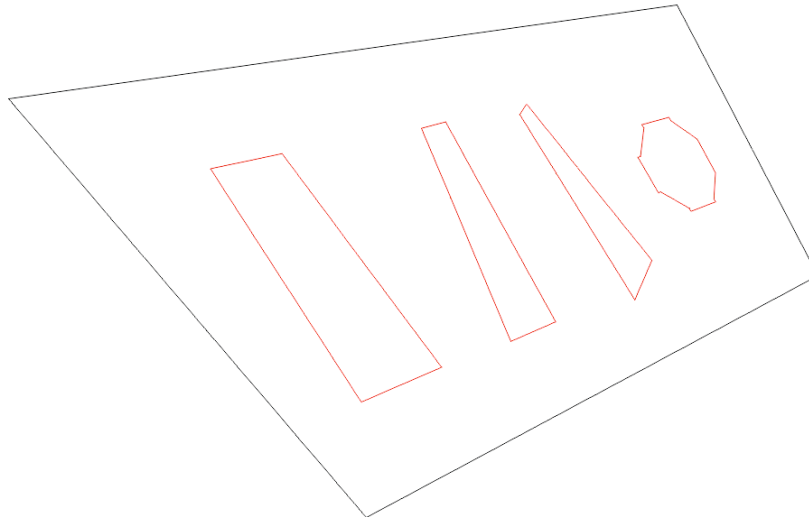
For the 40% scale model I laser cut 0.5mm gloss black acrylic but 1mm would be better for the 100% studio scale.



SVG FILES FOR WINDOW MASKS

SVG files are included in both 40% scale and original 100% studio scale to allow you to laser cut precise fitting adhesive masks over the windows when painting the model. The windows must be fitted before the model is assembled so the acrylic windows need protecting from paint.

These can simply be laser cut from suitable width painters masking tape.



All files supplied are copyright Duplex Designs.

© 2025 Duplex Designs

Do not distribute supplied PDF, SVG or STL files.