

Experience Level required:



Duplex Designs
REALITY DUPLICATED

Duplex Designs' Ghost In The Shell Briefcase Mini UZI

Introduction

At Duplex Designs we do love a great sci-fi weapon. Although our favourite has got to be Deckard's blaster from the movie Blade Runner the weapons seen in the live action movie Ghost in The Shell really stood out as well.

This is a very detailed model of the modified Mini UZI used by the Yakuza when they attacked the ambassadors at the Maciej Hotel in the 2017 live action movie Ghost In The Shell.

This download set includes a multi-part, functional briefcase handle/release mechanism along with two options for the Mini UZI build.

You can opt for an easy build, four-part solid Mini UZI model or a highly detailed Mini UZI that can be built as the Briefcase UZI or (with included alternative parts) as a standalone high detail Mini UZI model.

OK, we are a little late to the party with this model as the movie came out in 2017, but we believe the weapon is interesting enough to warrant its creation here in 2026.

Why This Model Was Created

We have not seen another model of this weapon.

Based on actual IMI Mini UZI dimensions this model is pretty accurate to the available stunt prop photos.

While not containing all the real Mini UZI parts it is a reasonably accurate model modified to suit FDM printing.

(We include a solid model split into four parts as well in case you decide to take an even easier build route. This still retains the high level of detail externally.)

Also included are the folding stock and retainer pin and an alternative ported barrel. These are not seen in the movie but will allow you to build a full Mini UZI rather than the movie prop.

Project Skill Level Required

You will need a medium level of skill in 3D printing and modelling to do justice to this model.

Part tolerances are quite tight so depending on what you create the parts with you may need to do some sanding and finishing to get parts to fit.

For example, FDM printing at 0.08mm layer height using a 0.4mm nozzle is good enough for a great fit for the assembly but as soon as you start to use resin parts the differences in resin shrinkage and tolerance will start to show.

NOTE: Although the model contains lots of detailed parts it should *not* be expected that final build will perform all the mechanical actions expected of the real weapon.

Please consider this a static model. Yes, you can field strip and rebuild this similar to the Mini UZI and the bolt will retract but this is recommended for display purposes only.

Springs can be used on the trigger, top cover release catch, barrel release catch and grip safety. We decided not to add a spring to the bolt although this can still be cocked backwards and forwards.

The magazine catch has been redesigned to allow for a simple spring rather than the original UZI spring.

Build Options

Briefcase NOT supplied. Notes are included. along with suitable catches, on how to cut up a briefcase to house the Mini UZI model.

See later for briefcase cutting guide.

Solid UZI + Briefcase Mechanism

Briefcase handle and deployment mechanism is multi-part and functional. A solid Mini UZI model is included that is split into four parts for easy FDM printing. This consists of front left and right parts, rear left and right parts. All parts can be glued together using the pegs provided.

Detailed UZI + Briefcase Mechanism

Briefcase handle and deployment mechanism is multi-part and functional. A more detailed UZI can be constructed using multiple parts that attempt to conform, where possible, to actual Mini UZI construction methods. This UZI model has moving parts such as trigger and magazine.

The magazine can hold three dummy rounds and contains a small 3D printed spring to allow rounds to compress slightly up against the bolt as the magazine is inserted.

Detailed UZI Standalone

A complete Mini UZI can also be created from the detailed parts. Just add the included Handguards, Receiver (With stock hinge), Cocking Knob, Folding Stock and Retaining Pin.

Also supplied is a ported barrel which may be used on this model.

The magazine can hold three dummy rounds and contains a small 3D printed spring to allow rounds to compress slightly up against the bolt as the magazine is inserted.

Build Material Choices

FDM Printer

We have had good results with at 0.08mm layer height using a 0.4mm nozzle using PLA and the parts fit is excellent.

It is also noted that larger parts such as the frame, slide and grip, may well exhibit VFA or ghosting which will require extra sanding and polishing.

Resin Printer




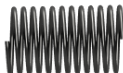








Not really suitable for the larger parts but smaller parts would benefit from the higher resolution.

Resin is quite unpredictable when it comes to shrinkage or indeed expansion and is very dependent on the resin used, cure times and how well the model has been sliced and supported so when it comes to larger items you may find a lot of sanding and finishing is required for a good fit of parts.

Hardware Required

The only parts that cannot be 3D printed are the springs. (Magazine Spring and Rear Sight Spring being the exception).

The grip and handguard nuts and bolt are rather unique so these can be 3D printed or you could substitute with real hardware as described below.

| | |
|------------------------------------------------------------------------------------------------------------------------|----------------------------------------------------------------|
| Barrel Catch Spring  | 2.5mm diameter, 8mm length X1 |
| Trigger Spring  | 4mm diameter, 10mm length X1 |
| Cover Catch Spring  | 4mm diameter, 25mm length X1 |
| Magazine Catch Spring  | 6mm diameter, 10mm length X1 |
| Grip Safety Spring  | 8mm diameter, 20mm length X1 |
| Stock Spring  | 8mm diameter, 25mm length X1 |
| Release Mechanism Spring  | 8mm diameter, 30mm length X1 |
| Handguard Front Bolt  | Slot Head M2 x 10mm X4 |
| Handle Mechanism Bolt  | Cap Head M3 x 10mm X28 |
| Handle Mechanism Bolt  | Cap Head M3 x 15mm X2 |
| Handle Mechanism Bolt  | Machine Head M3 x 12mm X12 |
| Handguard Bolt  | Cap Head M3 x 20mm X2 (For briefcase Mini UZI build) |

Grip BoltSlot Head M3 x 27mm **X2**

Can be cut down length of M3 X 30mm bolt. Nuts would ideally be slotted round nuts. *3D printed parts have been included.*

Cocking Knob ScrewSlot Head M4 X 15mm **X1**

Threaded into Cocking Knob or Washer and Slot Cover Plate but locates into hole on top of bolt when Receiver Cover is fitted to top of Receiver.

Cocking Knob Screw ShortSlot Head M4 X 3mm **X1**

Threaded into Cocking Knob and Slot Cover Plate Modified if you fit the optional Cocking Knob in the Briefcase UZI build. You will need to cut down a longer bolt to 3mm length.

Handguard BoltSlot Head M3.5 x 33mm **X2**

Can be cut down length of M3.5 X 35mm bolt. Nuts would ideally be slotted round nuts. 3D printed parts have been included. *(For standalone full Mini UZI build only)*

Stock Retaining RingCirclip 4mm inside diameter **X1**

Optional if building complete UZI with stock.

Parts List

Handle Parts

Only required if you are building the briefcase UZI. This can be used with the Solid UZI model or the Detailed UZI model.

Following is a list of STL model parts along with notes. (**ALT** = There are alternative parts that can be used.)



Bar Left

Print horizontally for strength and use 100% infill.

Print X 1



Bar Right

Print horizontally for strength and use 100% infill.

Print X 1



Front Plate

Print X 15



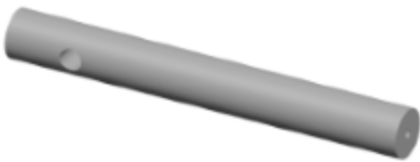
Handle Front Plate

Print X 1



Handle Rear Plate

Print X 1



Handle

Print horizontally for strength and use 100% infill.

Print X 1

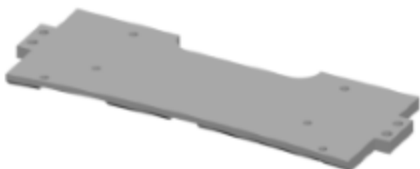


Plate Inner Left

Print X 1

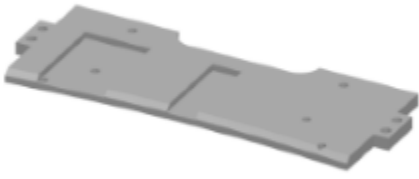


Plate Inner Right

Print X 1



Plate Lower Left

Print X 1



Plate Lower Right

Print X 1



Plate Top
Print horizontally for strength.

Print X 1

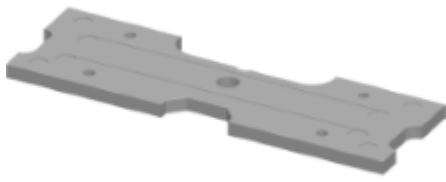


Plate Upper Left

Print X 1



Plate Upper Right

Print X 1



Rear Plate Half Height

Some photos show this rear plate at half height. You can use this or use the Rear Plate below at full height.

Print X 1 **ALT**



Rear Plate

Use this for a full height Rear Plate.

Print X 1 **ALT**



Release Block
Print at 100% infill.

Print X 1



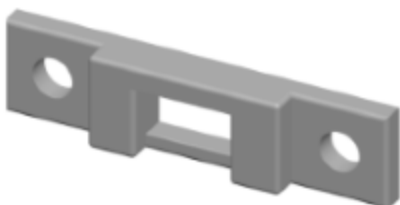
Release Button

Print X 1



Release Rod
Print horizontally for strength and use 100% infill.

Print X 1



Locking Plate
Fit to briefcase top, one on each side to engage Release Block.
Print at 100% infill.

Print X 2

Solid Mini UZI Parts

Simple solid UZI parts can only be used for briefcase UZI and not for stand-alone UZI as it has holes in the receiver for the lock mechanism mounting and lacks the rear stock hinge. Also has non-standard foregrip built in.

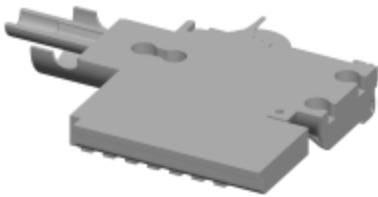
Following is a list of STL model parts along with notes.



Mini UZI Front Left

Easy build solid UZI with only four parts + pegs.
Print flat onto build plate.

Print X 1



Mini UZI Front Right

Easy build solid UZI with only four parts + pegs.
Print flat onto build plate.

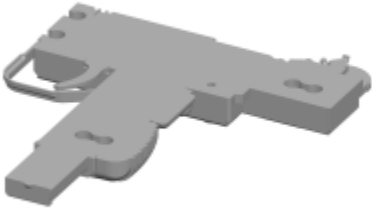
Print X 1



Mini UZI Rear Left

Easy build solid UZI with only four parts + pegs.
Print flat onto build plate.

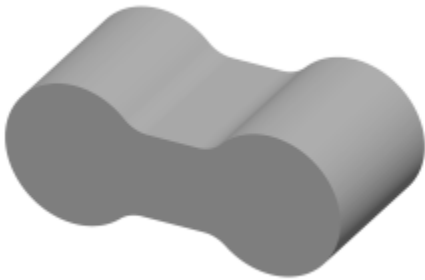
Print X 15



Mini UZI Rear Right

Easy build solid UZI with only four parts + pegs.
Print flat onto build plate.

Print X 1



UZI Peg

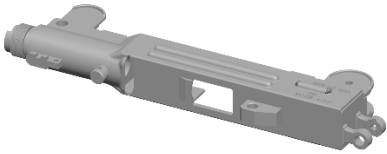
Print with 100% infill.

Print X 5

Detailed Mini UZI Parts

Detailed UZI can be used standalone or to place inside shrouds for Skinny Man UZI.

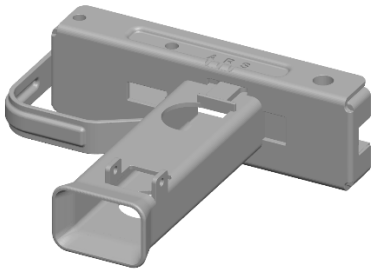
Following is a list of STL model parts along with notes. (**ALT** = There are alternative or optional parts that can be used.)



Receiver

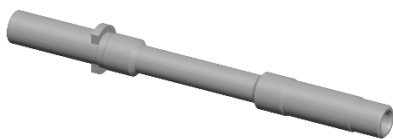
Use alternative part for stand-alone UZI build.

Print X 1 **ALT**



Pistol Grip Body

Print X 1

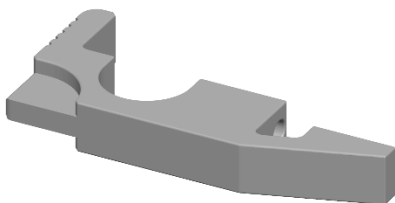


Barrel

Use this barrel for Skinny Man UZI. There were no ports on the screen used UZI.

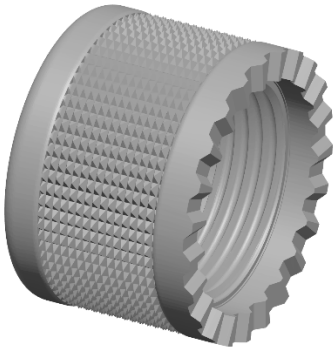
Use alternative Barrel Ported part for stand-alone UZI build if you wish.

Print X 15 **ALT**



Barrel Retaining Catch

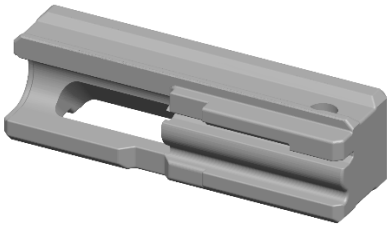
Print X 1



Barrel Retaining Nut

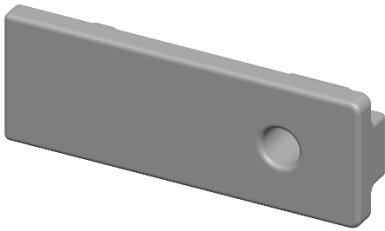
Print flat face down and use support blocker to stop threads being supported.

Print X 5



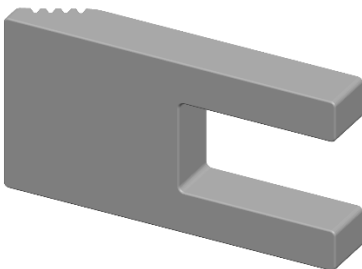
Bolt

Print X 1



Cocking Lug

Print X 1



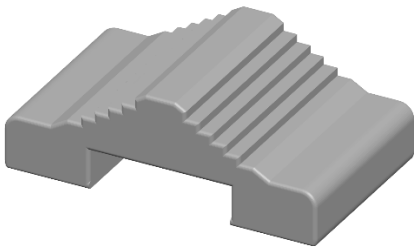
Cover Catch

Print X 1



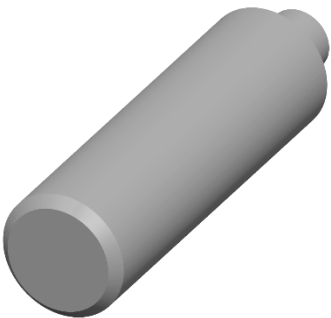
Extractor Pin

Print X 1



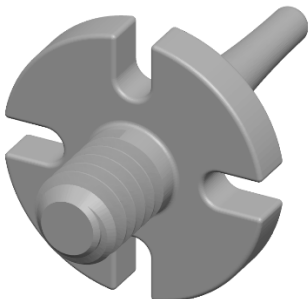
Fire Selector Button

Print X 1



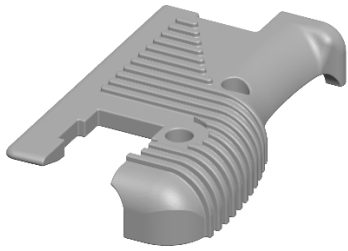
Front Sight Detent

Print X 1



Front Sight

Print X 1



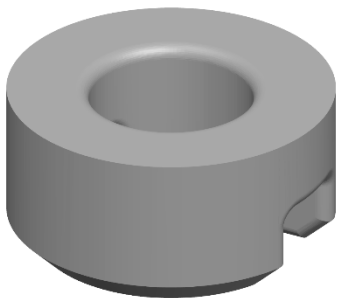
Grip Left

Print X 1



Grip right

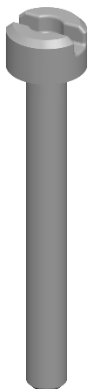
Print X 1



Grip Nut

Use this part if you are not using real hardware.

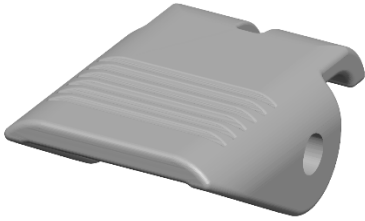
Print X 2 **ALT**



Grip Bolt

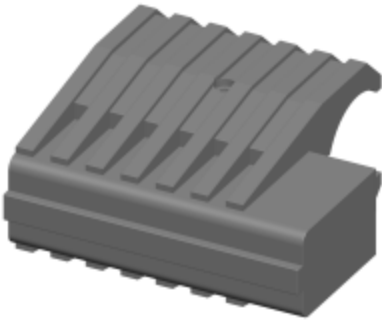
Use this part if you are not using real hardware.

Print X 2 **ALT**



Magazine Catch

Print X 1



Foregrip

Only used on Briefcase UZI build, not stand-alone UZI build.

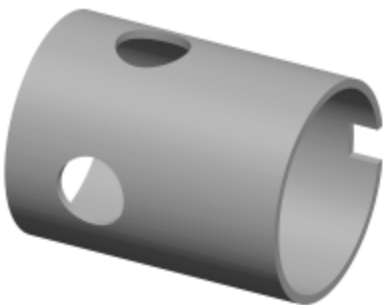
Print X 1



Foregrip Front

Only used on Briefcase UZI build, not stand-alone UZI build.

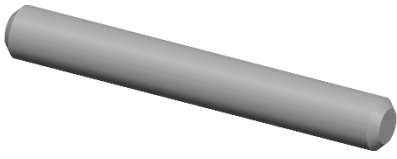
Print X 1



Barrel Shroud

Only used on Briefcase UZI build, not stand-alone UZI build.

Print X 1



Magazine Catch Pin

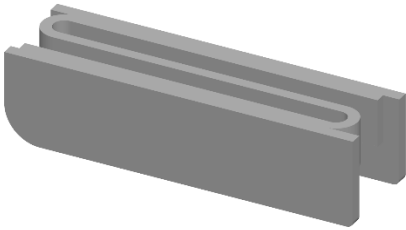
Print with 100% infill horizontally.

Print X 1



Magazine

Print X 1



Magazine Spring

Use this if you intend to place dummy rounds in the magazine.
Print with 100% infill.

Print X 1

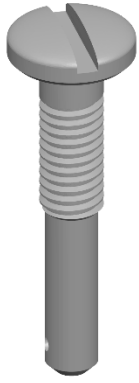
ALT



Pistol Grip Pin

Print with 100% infill horizontally.

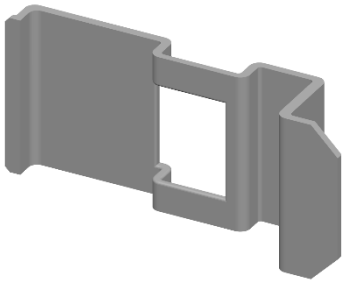
Print X 1



Rear Sight Axis

Print with 100% infill horizontally.

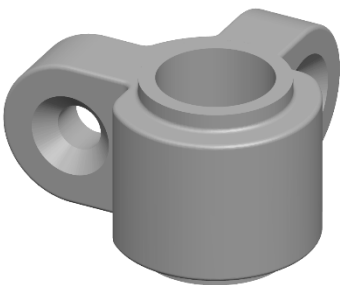
Print X 1



Rear Sight Spring

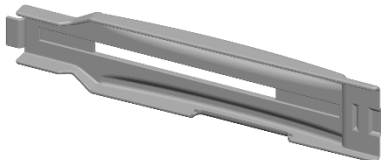
Print with 100% infill.

Print X 1



Rear Sight

Print X 1

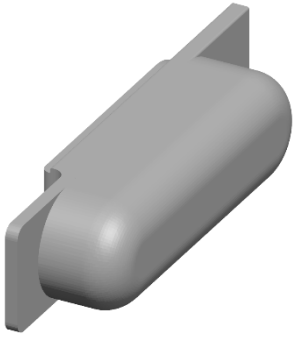


Receiver Cover

Use alternative part for stand-alone UZI build.

Print X 1

ALT



Safety Grip Button

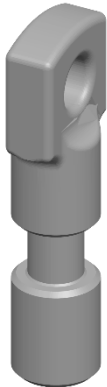
Print X 1



Sear Pin

Print with 100% infill horizontally.

Print X 1



Sling Swivel

Print with 100% infill horizontally.

Print X 1



Slot Cover Plate

This is modified to allow optional Cocking Knob to be fitted to rear of plate.

Use alternative part for stand-alone UZI build.

Print X 1

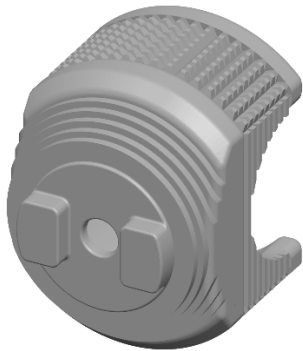




Cocking Knob Washer

Used only in Briefcase UZI build. Fitted where Cocking Knob would have been located in the forward position.
Print with 100% infill.

Print X 1



Cocking Knob

Optional, can be fitted to modified Slot Cover Plate included with these parts. Fitted to the rear of the plate.
Print with 100% infill.

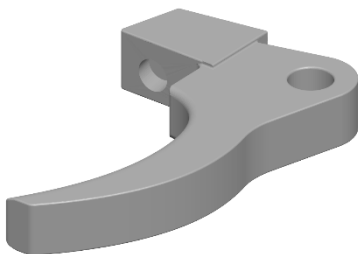
Print X 1



Trigger Pin

Print with 100% infill horizontally.

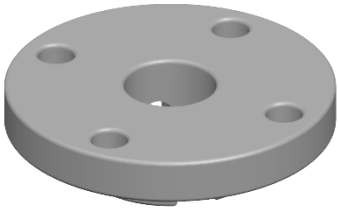
Print X 1



Trigger

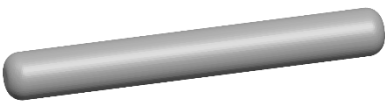
Print with 100% infill.

Print X 1



Windage Drum

Print X 1

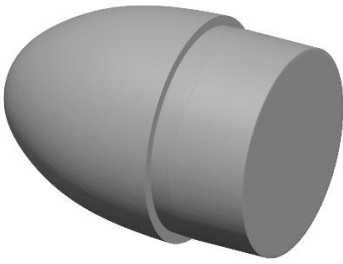


Windage Drum Pin
Print with 100% infill horizontally.

Print X 1

Cartridge Parts

If you are building the detailed Mini UZI you may want to print these dummy rounds to fit into the magazine.



9 X 19 Round Bullet

Bullet to assemble into cartridge for dummy round.

Optional parts to fill magazine but remember these will not be visible.

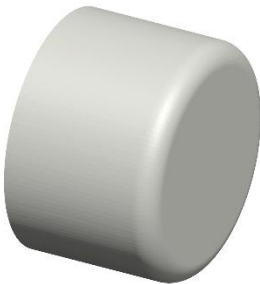
Print X 3



9 X 19 Round Cartridge

Cartridge for dummy round.

Print X 3



9 X 19 Round Primer

Primer to insert into base of Cartridge.

Print X 3

Additional/Replacement Parts For Stand-Alone UZI

Stand-alone Mini UZI can only be built with Detailed UZI parts.



Receiver

Original UZI Receiver with no handle assembly mounting holes.
Replaces modified one from Detailed UZI build.

Print X 1 **ALT**



Receiver Cover

Original UZI Receiver Cover with no handle assembly mounting holes.
Replaces modified one from Detailed UZI build.

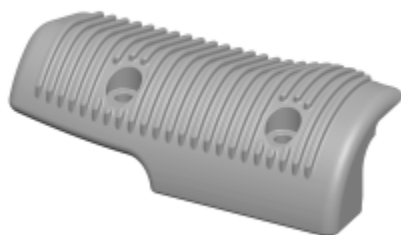
Print X 1 **ALT**



Slot Cover Plate

Original UZI Slot Cover Plate. Replaces modified one from Detailed UZI build.
Print with 100% infill.

Print X 1 **ALT**



Handguard Left

Unique to stand-alone UZI build.

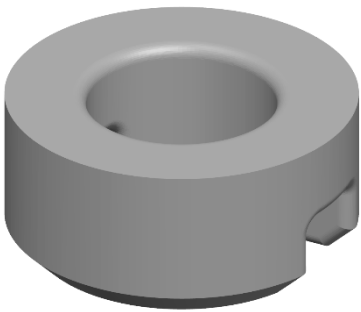
Print X 1



Handguard Right

Unique to stand-alone UZI build.

Print X 1



Handguard Nut

Use this part if you are not using real hardware.

Print X 1

ALT



Handguard Bolt

Use this part if you are not using real hardware.

Print X 2

ALT



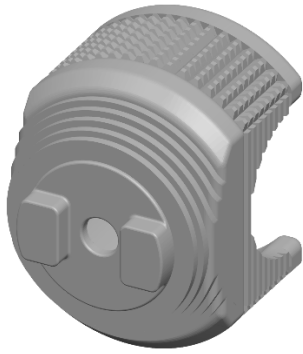
Stock Retaining Ring

Use instead of circlip to secure folding stock. Fits to top of Connecting Pin.

Print with 100% infill.

Unique to stand-alone UZI build.

Print X 1



Cocking Knob

Print with 100% infill.

Print X 1



Folding Stock

Print with 100% infill.

Unique to stand-alone UZI build.

Print X 1



Connecting Pin

Print with 100% infill horizontally.

Unique to stand-alone UZI build.

Print X 1



Barrel Ported

Optional to replace the un-ported barrel of the Briefcase UZI build.

Print X 1

ALT

Assembly Sequence

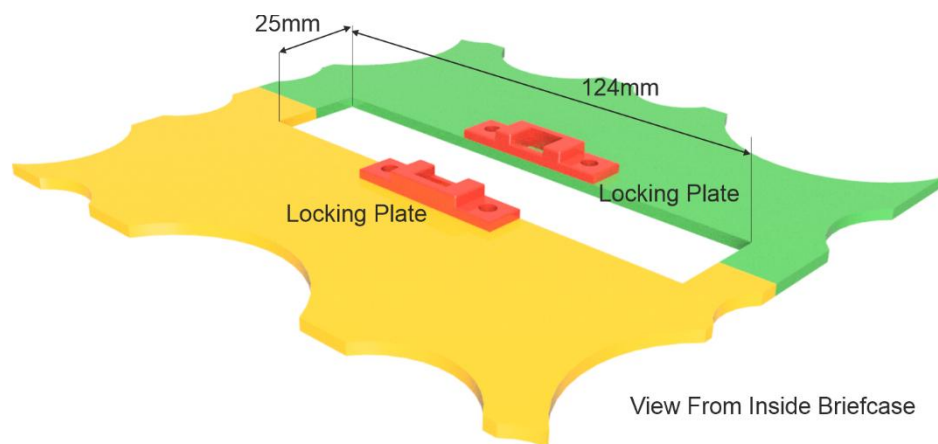
Briefcase Cutting Guide

The briefcase should be a solid, thin-walled plastic case that hinges open along the centreline. Observe minimum internal dimensions required of: width 85mm, height 260mm, width 450mm.

You will need to remove the existing handle and disable any existing latches or locks on your selected briefcase.

You will need to cut a rectangular section from the top centre of the briefcase and fit the two Locking Plates from the inside.

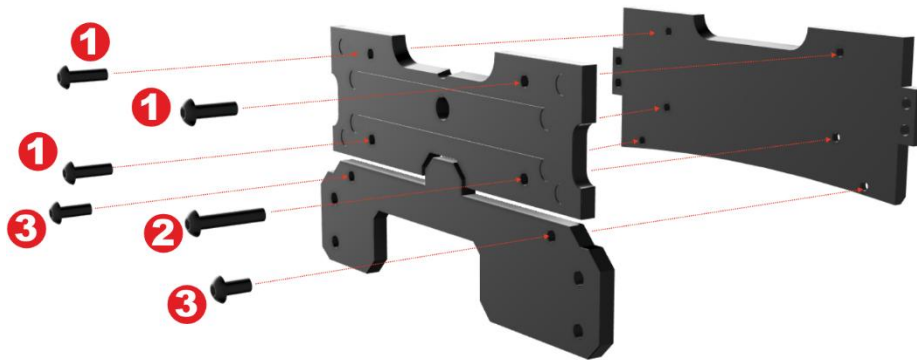
Unfortunately, these dimensions rely on the thickness of the briefcase shell so you may need to experiment with the cutout to ensure that the Release Block can engage with the Locking Plates so that the briefcase is held closed until the Release Button is pressed.



You will be trying to achieve something similar to the prop photo shown below.

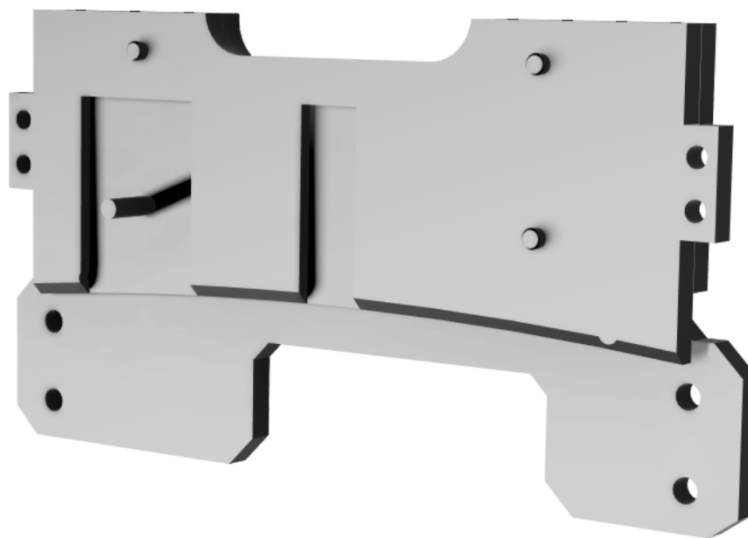


Handle Assembly

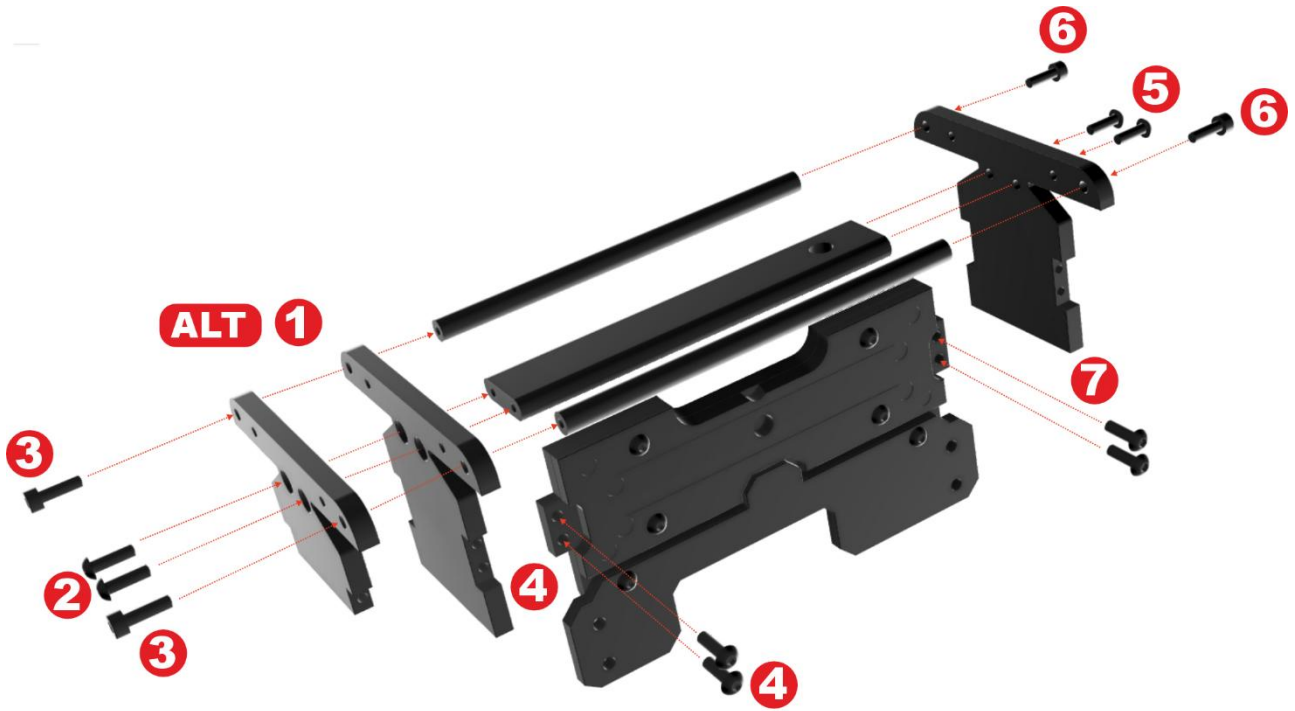


1. Use 3 X cap head M3X10mm bolts to secure Plate Upper Right to Plate Inner Right.
2. Use 1 X cap head M3X15mm bolt to secure Plate Upper Right to Plate Inner Right.
3. Use 2 X cap head M3X10mm bolts to secure Plate Lower Right to Plate Inner Right.

The reverse side of what you have just assembled should look like this:



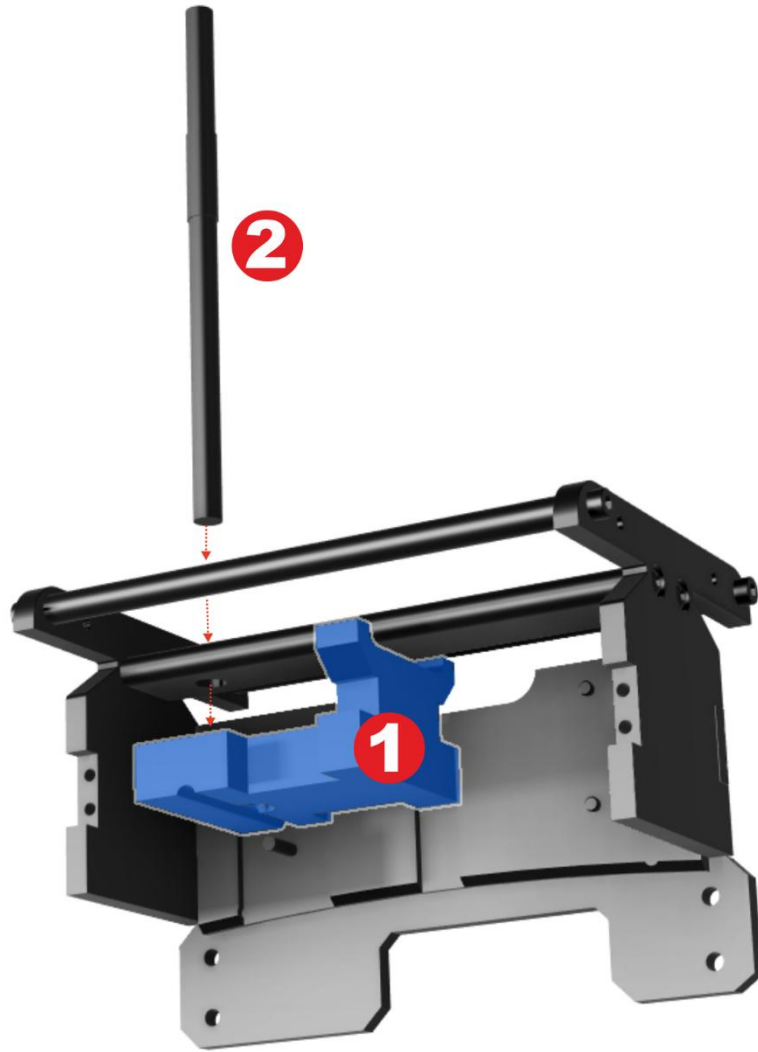
Note where the longer M3X15mm bolt should be fitted.



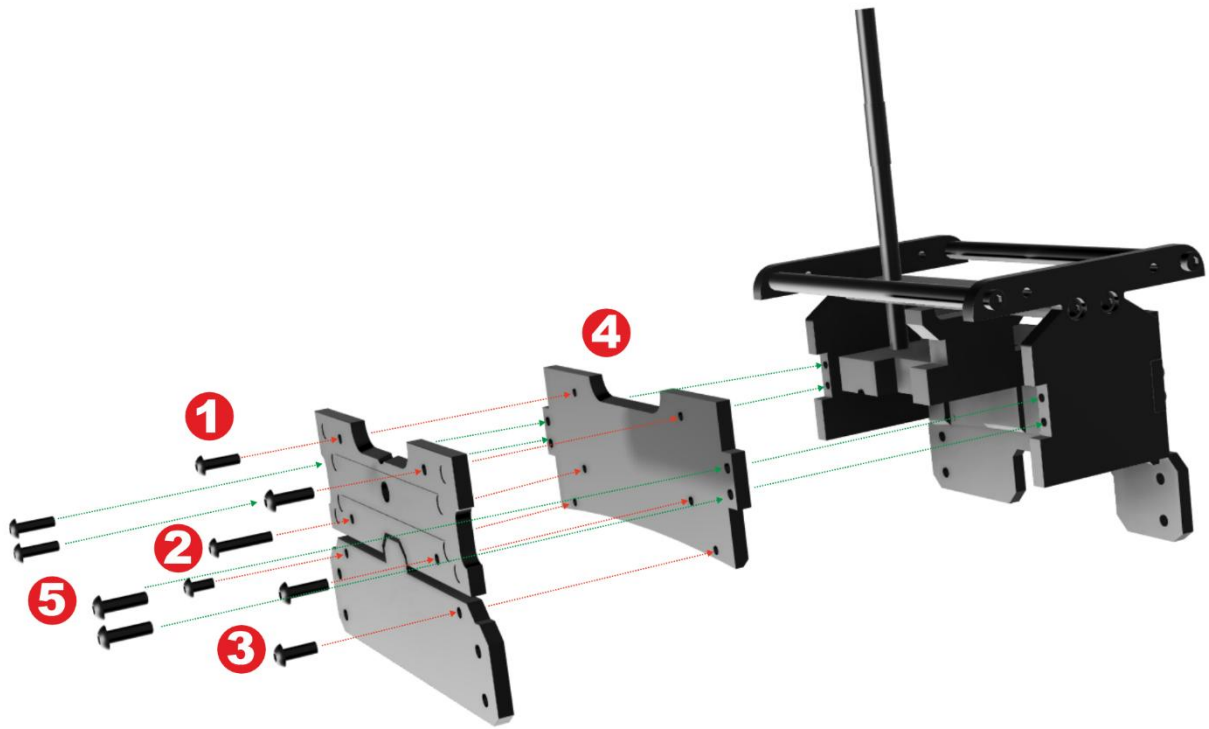
1. Decide whether to use Rear Plate or Rear Plate Half Height.
2. Use 2 X cap head M3X10mm to secure Rear Plate to Plate Top.
3. Use 2 X machine head M3X12mm bolts to secure Rear Plate to Bar Left and Bar Right.
4. Slide this assembly on to the plates assembled in the previous stage and secure with 2 X cap head M3X10mm bolts.
5. Use 2 X cap head M3X10mm to secure Front Plate to Plate Top.
6. Use 2 X machine head M3X12mm bolts to secure Front Plate to Bar Left and Bar Right.
7. Slide this assembly on to the plates assembled in the previous stage and secure with 2 X cap head M3X10mm bolts.

The assembled parts should look like this:



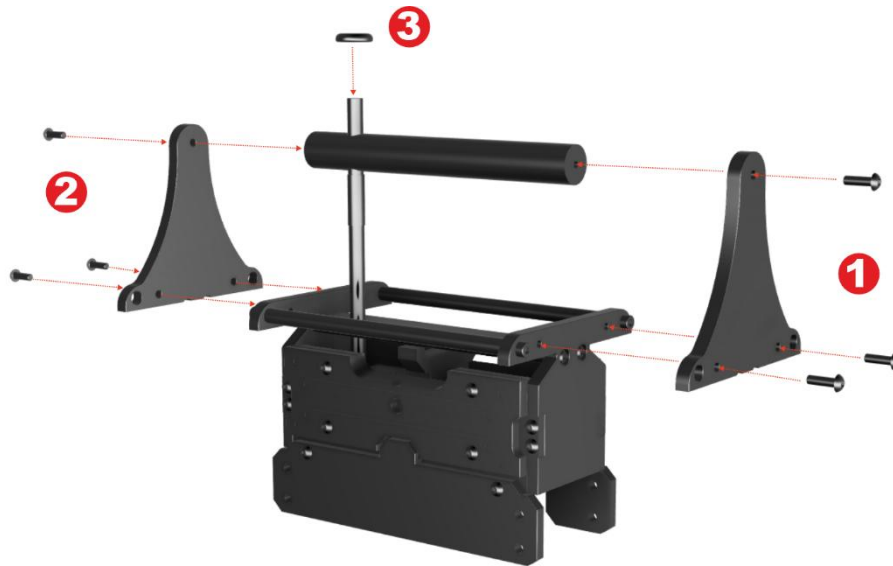


1. Fit Release Block into channels in the Plate Inner Right.
2. Slide in Release Rod through hole in top of Top Plate and into hole in top of release Block. This should be secured in Release Block with glue.

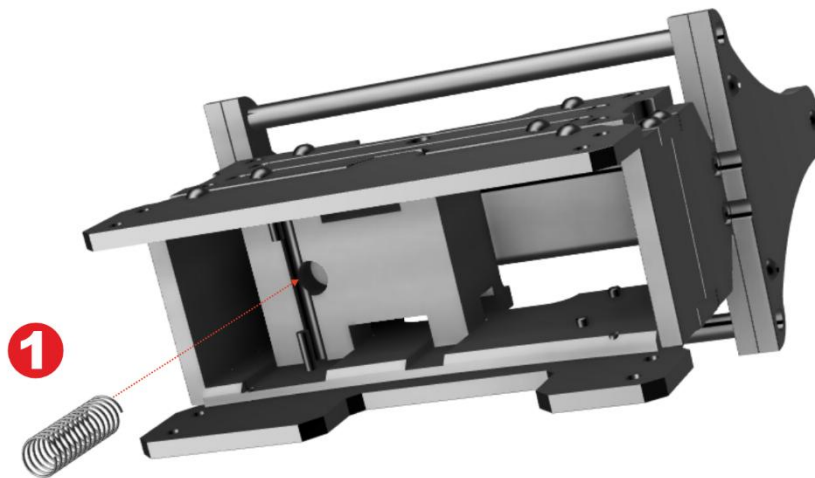


This stage looks complicated but is really a repeat of the earlier section to assemble the right hand plates.

1. Use 3 X cap head M3X10mm bolts to secure Plate Upper Left to Plate Inner Left.
2. Use 1 X cap head M3X15mm bolt to secure Plate Upper Left to Plate Inner Left.
3. Use 2 X cap head M3X10mm bolts to secure Plate Lower Left to Plate Inner Left.
4. Fit the above plates onto the main assembly. Ensure that the release Block is sitting in the channels of both inner plates.
5. Secure the left hand plates to the main assembly with 4X cap head M3X10mm bolts.



1. Use 3 X cap head M3X10mm bolts to secure Handle Rear Plate to Rear Plate and Handle.
2. Use 3 X cap head M3X10mm bolts to secure Handle Front Plate to Front Plate and Handle.
3. Glue Release button to the top of the Release Rod.

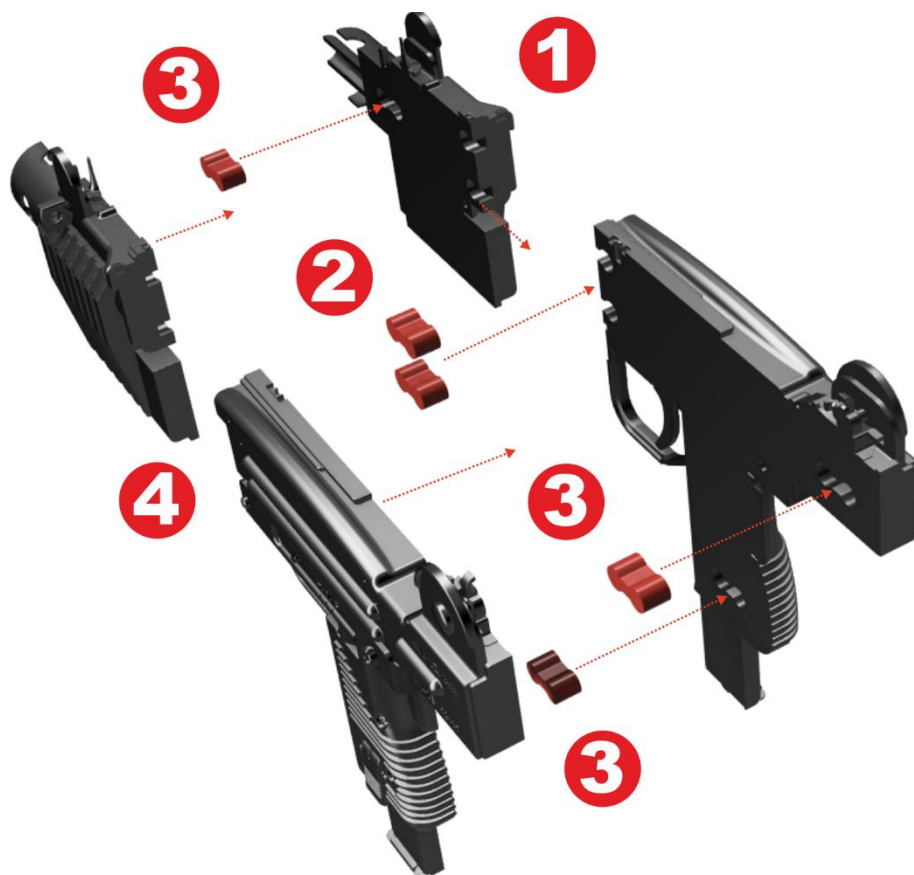


1. Finally glue the 8X30mm Release Spring into the hole at the bottom of the Release Block.

Simple Solid Mini UZI Assembly

This is the simple option for building the Mini UZI. This assembly can only be used to create the Briefcase Mini UZI model.

The following steps 1 through 4 should all be completed before glue has a chance to dry.



1. Glue the right-hand front and rear parts of the UZI together but do not let the glue dry as step two is also required.
2. Fit two pegs to hold the right-hand UZI parts together.
3. Glue in the other three pegs.
4. Glue on the left-hand UZI part using the pegs to align.

Detailed Mini UZI Assembly For Briefcase Build

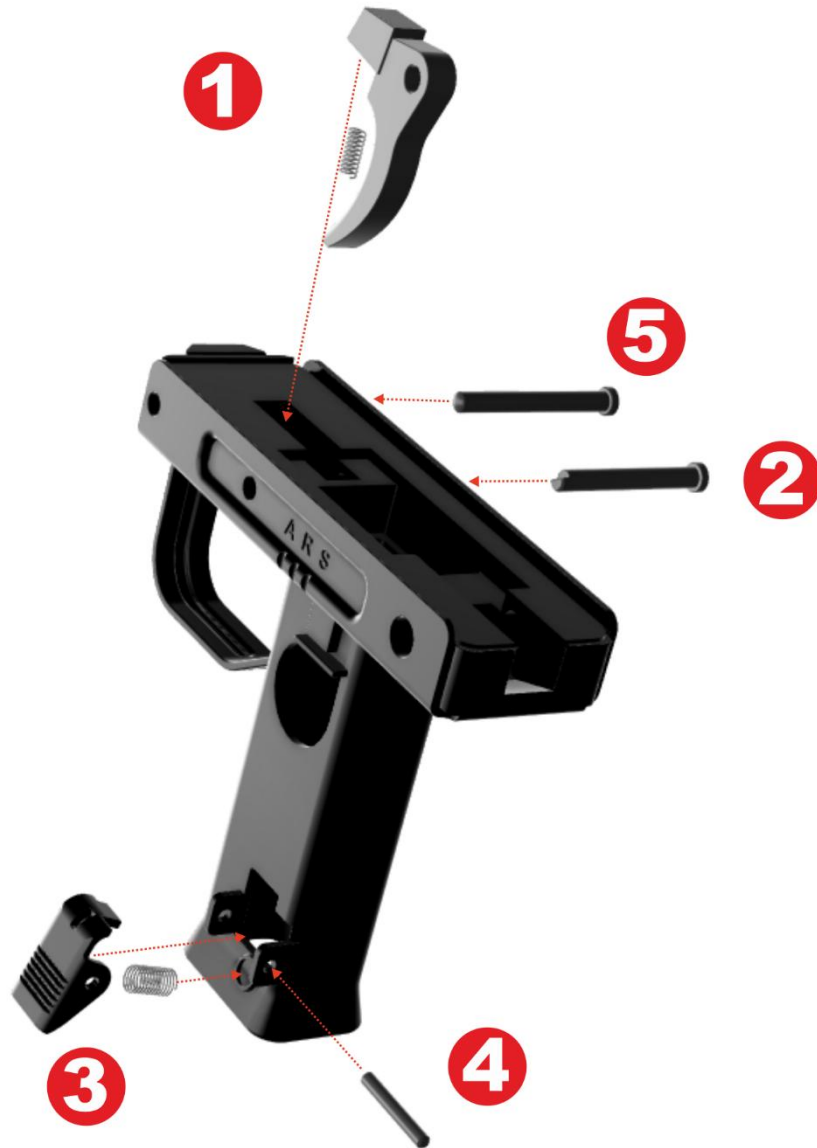
This model consists of multiple parts and adheres closely to original UZI components and assembly but with modifications to allow easier 3D printing.

Magazine Sub-Assembly



1. Assemble rounds (X3) by fitting bullet and primer to case.
2. Glue Magazine Spring into Magazine. This sits at the lowest level of the aperture in the top of the magazine.
3. Fit all three rounds into the top of the Magazine. First sits above spring, second above that but on the far side of the spring. The final round sits centrally in the lip of the Magazine.

Pistol Grip Body Sub-Assembly 1



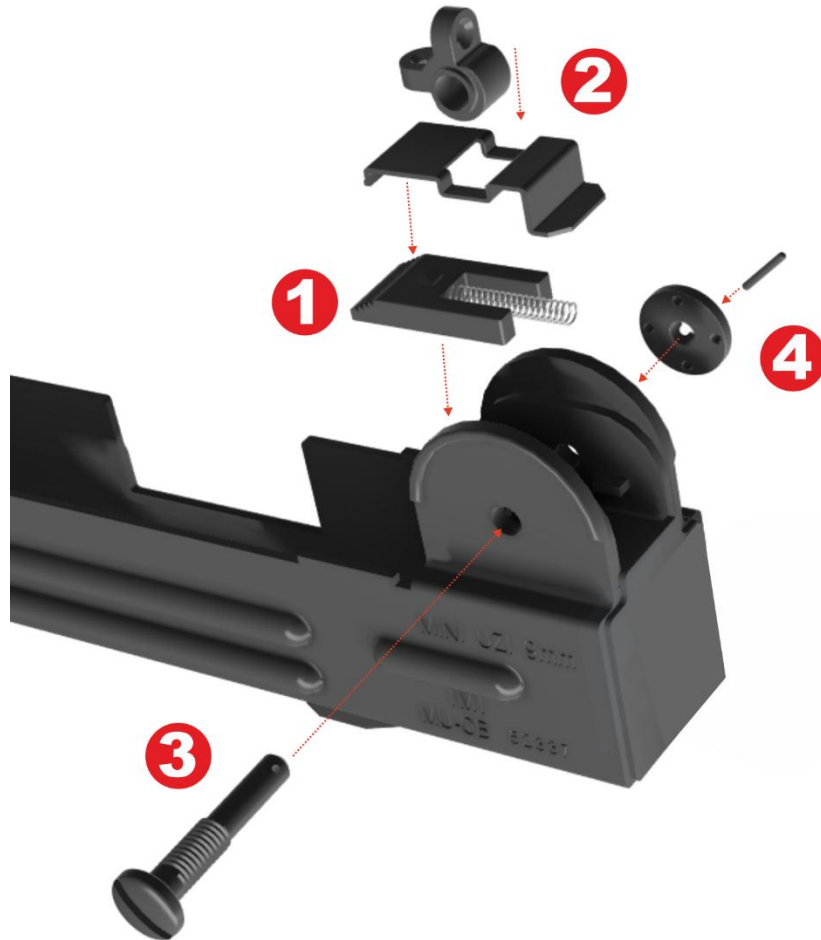
1. Fit the Trigger and Trigger Spring into the top of the Pistol Grip Body.
2. Secure the Trigger with the Trigger Pin.
3. Align the Magazine Catch and Magazine Catch Spring with the holes on the Pistol Grip Body.
4. Secure the Magazine Catch by sliding in the Magazine Catch Pin.
5. Fit the Sear Pin. This has no function other than cosmetic.

Pistol Grip Body Sub-Assembly 2



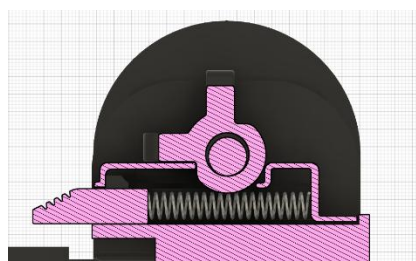
1. Fit Grip Left and Grip Right to the Pistol Grip Body ensuring that the Grip Safety Button and Grip Safety Button Spring are sandwiched in between.
2. Secure the grips with the grip bolts and nuts.
3. Glue Fire Selector Button to the Pistol Grip Body.

Receiver Assembly 1

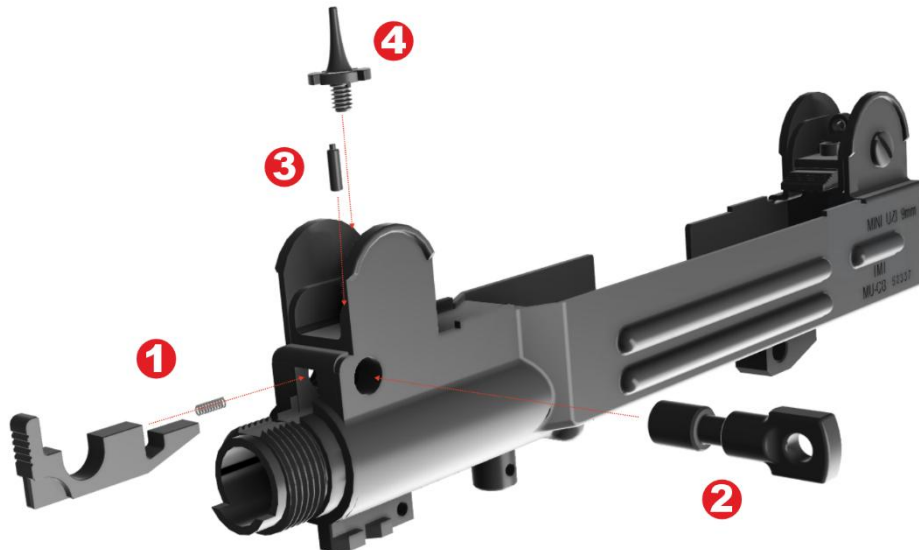


1. Place Cover catch Spring in the cutout in the Cover Catch. Lower this assembly into the top rear of the Receiver.
2. Sit the Rear Sight Spring over the top of the Cover Catch. Ensure that the lip at the front of the rear Sight Spring sits over the raised part of the Cover Catch and the Cover Catch Spring is retained within the rear of the Rear Sight Spring.
The Rear Sight sits on top of this with hole aligned with holes in the Receiver.
3. Insert the Rear Sight Axis to hold all components together. The Cover Catch should now be able to be pushed in towards the rear and allowed out again under spring pressure whilst being retained by the Rear Sight Spring.
4. Fit the Windage Drum over the end of the Rear Sight Axis and secure with the Windage Drum Pin.

The following sectional image shows how the Cover Catch is held in place by the Rear Sight Spring.

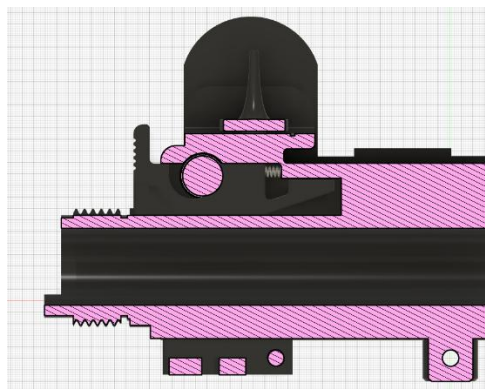


Receiver Assembly 2

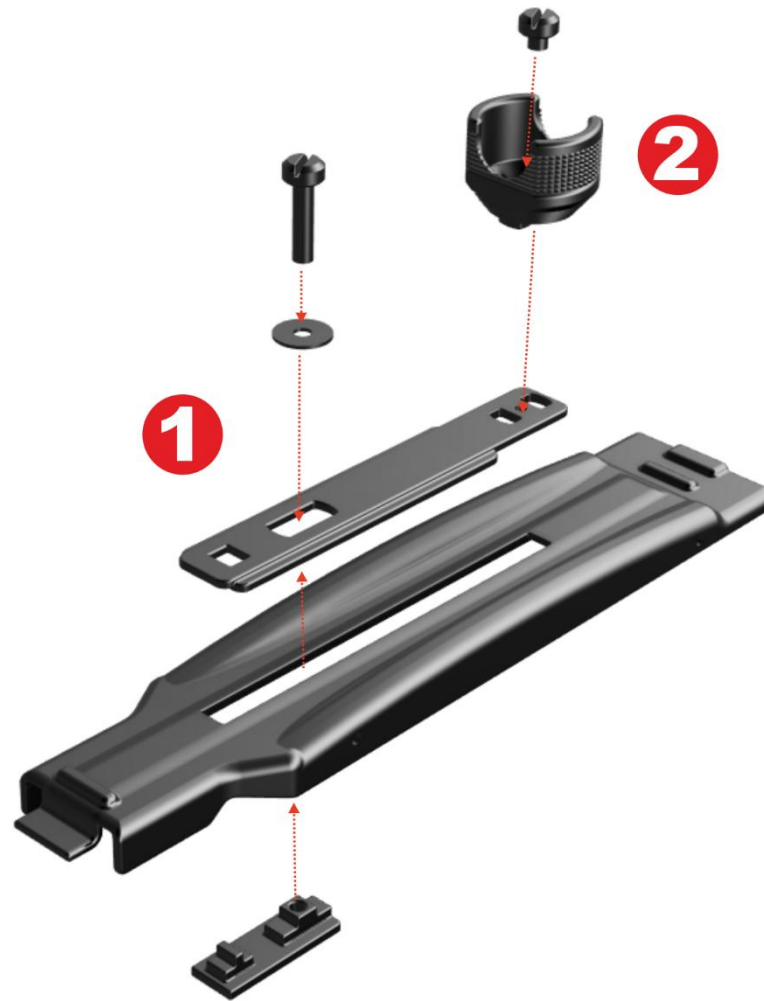


1. Slide the Barrel Catch Spring into the hole in the Barrel Catch and slide this assembly into the front of the Receiver.
2. Whilst pushing the Barrel Catch in as far as it will travel against the spring, insert the Sling Swivel into the hole in the Receiver. Once you let go of the Barrel Catch this should hold the Sling Swivel in place.
3. Insert Front Sight Detent into the small hole in the top of the Receiver.
4. Push the Front Sight into the larger hole in the top of the Receiver. As the hole is not threaded you may need a spot of glue to secure.

The following sectional image shows how the Barrel Catch holds the Sling Swivel in place.

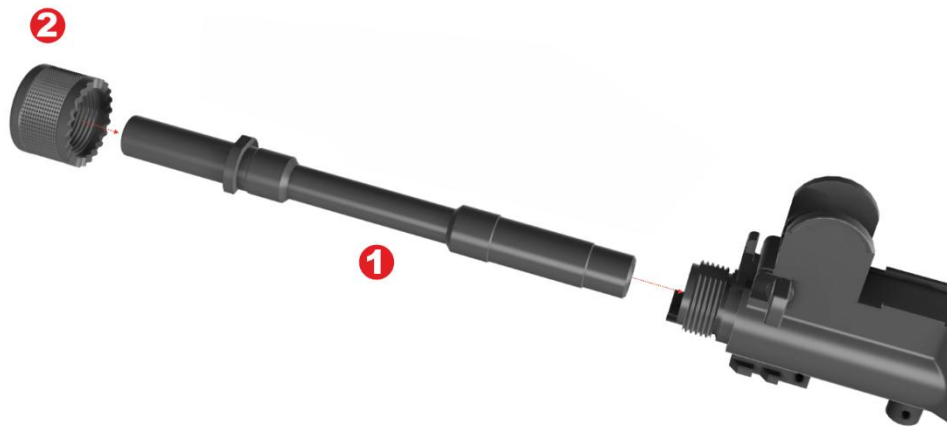


Receiver Cover Assembly



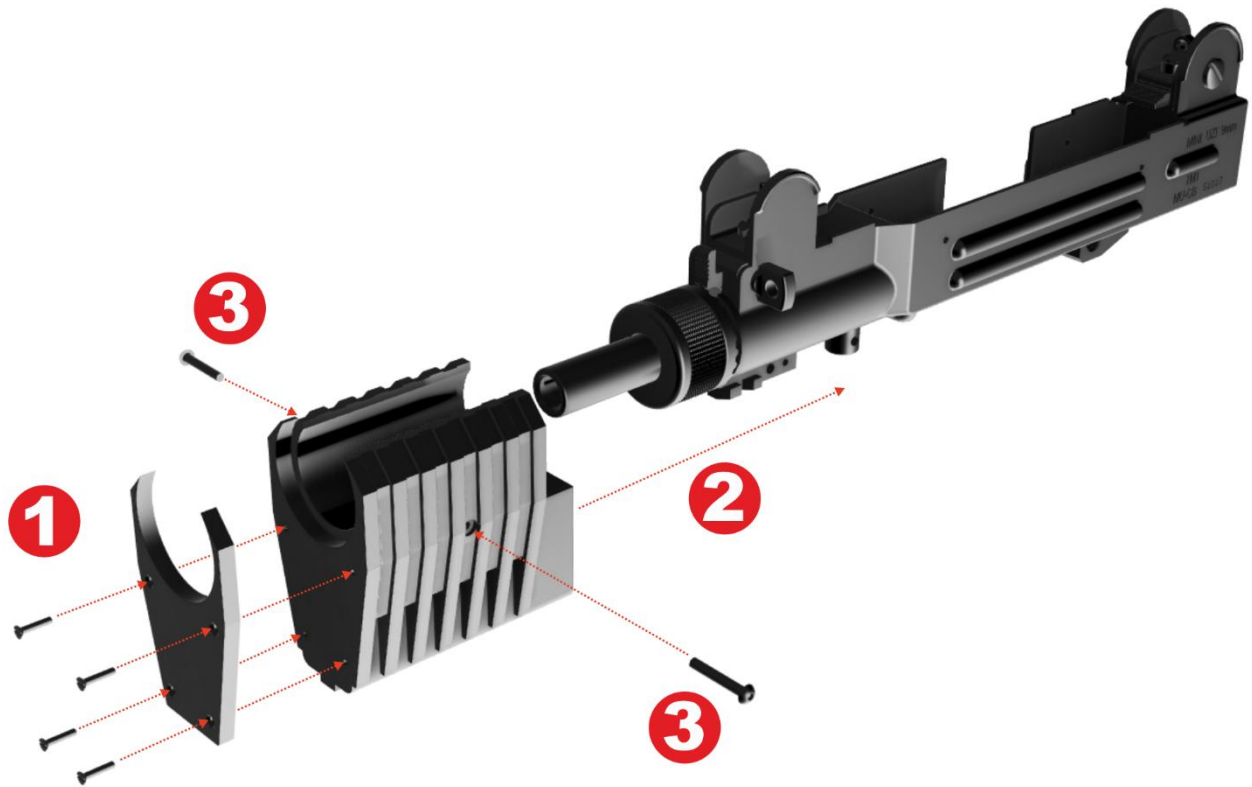
1. Use M3X15mm slotted bolt to secure Cocking Knob Washer to Slot Cover Plate Modified and pass through Receiver Cover and into Cocking Lug.
The cocking mechanism should be free to slide forwards and backwards.
2. This part is optional as the cocking mechanism is not visible on any of the prop photos to be able to replicate what was actually used.
It may be that the UZI is pre-cocked manually before assembling into the briefcase but to provide a practical solution the Slot Cover Modified will accept a Cocking Knob in the rear position.
The Cocking Knob can be secured with an M3 X 3mm bolt. This will probably require gluing as well.

Barrel Assembly



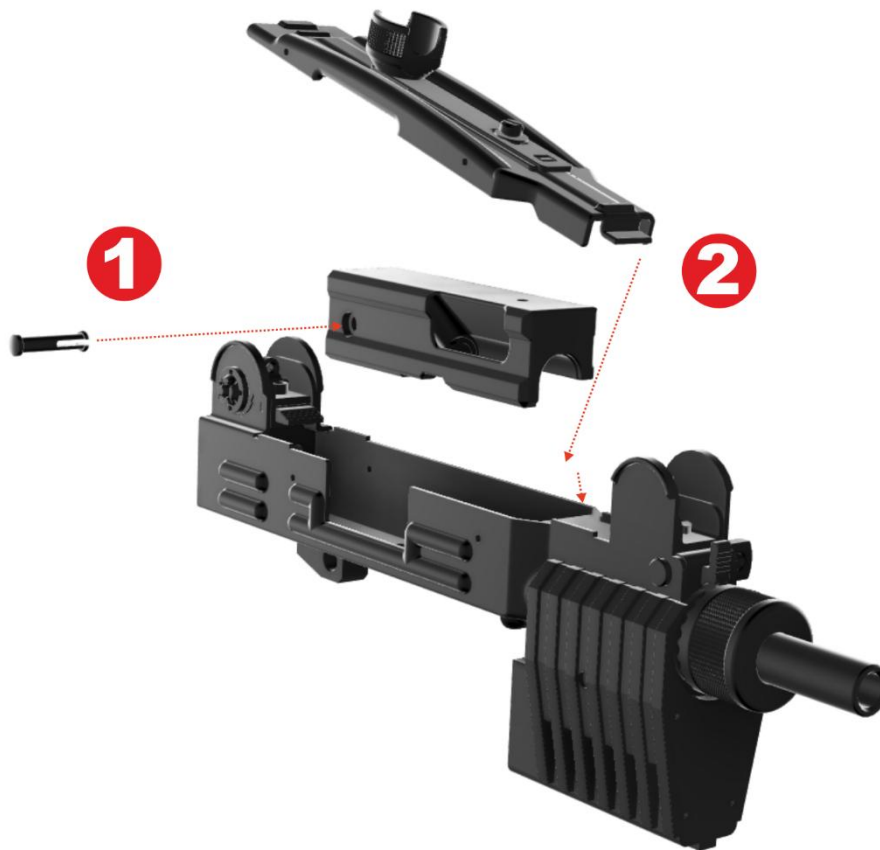
1. Slide the Barrel into the front of the Receiver. Note orientation where half cut on Barrel aligns with half cut in Receiver.
2. Secure the barrel by screwing on the Barrel Retaining Nut. NOTE: as you finish tightening this hold in the Barrel Catch and find a notch in the Barrel retaining Nut that locates with the Barrel Catch at such a point where the barrel is held in place but so is the Sling Swivel. i.e. the Barrel Catch should still be pushed forward by the spring thus still holding the Sling Swivel in place.

Handguard Assembly



1. Fix Foregrip Front to Foregrip using 4 X M2X12mm slot head screws.
2. Slide Foregrip assembly onto front of Receiver.
3. Use M3X20 cap head bolts on each side to secure Foregrip to receiver.

Bolt Assembly



1. Push Extractor Pin into Bolt. Slide Bolt into the recess in the top of the Receiver.
2. Fit the Receiver Cover assembly (NOTE: you may not have the optional Cocking Lever) onto the top of the Receiver by tilting down the front and locating the lip into the recess in the front of the Receiver. Then lower the rear onto the Receiver but ensure that the Cocking Knob Bolt (15mm) fits into the hole on the top of the Receiver.
IMPORTANT: Slide back the Cover Catch until the Receiver Cover is fully down then slide it back out to lock the Receiver Cover in place.

Receiver and Pistol Grip Body Assembly



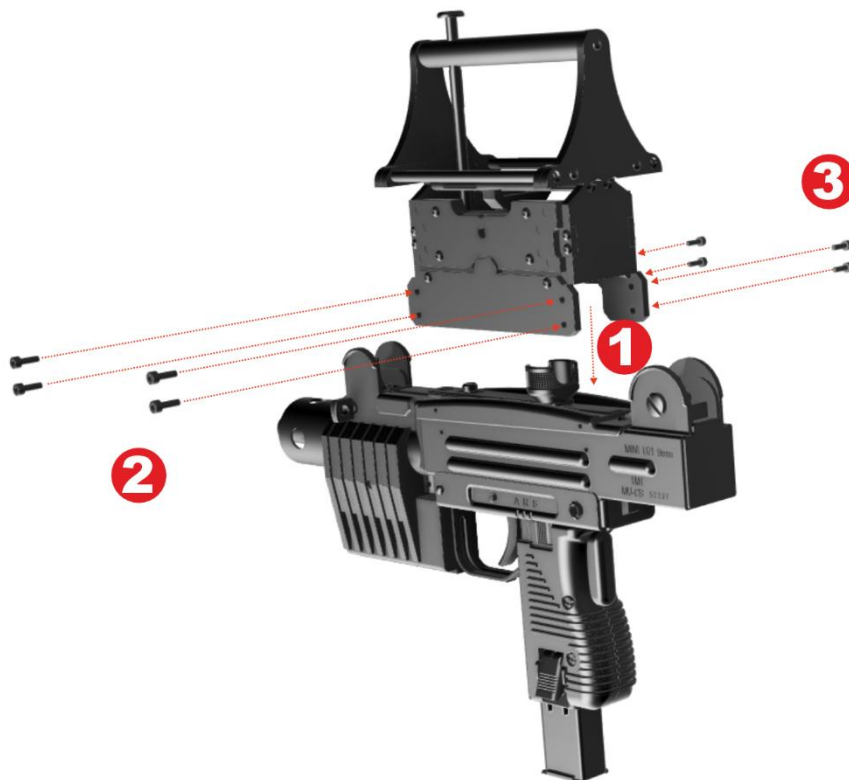
1. Fit the Pistol Grip Body assembly into the Receiver by locating the lip at the front with the recess in the Receiver. Set it flat against the underside of the Receiver.
2. Fit the Pistol Grip Pin through the Pistol Grip Body and the Receiver to lock everything together.

Final Parts



1. Slide the Barrel Shroud onto the front of the Barrel Retaining Nut. This will probably require a spot of glue.
2. Fit the magazine.

Handle Fitting



1. Slide the Barrel Shroud onto the front of the Barrel Retaining Nut. This will probably require a spot of glue.
2. Fit the magazine.
- 3.

Stand-Alone Detailed Mini UZI Assembly

This model consists of multiple parts and adheres closely to original UZI components and assembly but with modifications to allow easier 3D printing.

Magazine Sub-Assembly



1. Assemble rounds (X3) by fitting bullet and primer to case.
2. Glue Magazine Spring into Magazine. This sits at the lowest level of the aperture in the top of the magazine.
3. Fit all three rounds into the top of the Magazine. First sits above spring, second above that but on the far side of the spring. The final round sits centrally in the lip of the Magazine.

Pistol Grip Body Sub-Assembly 1



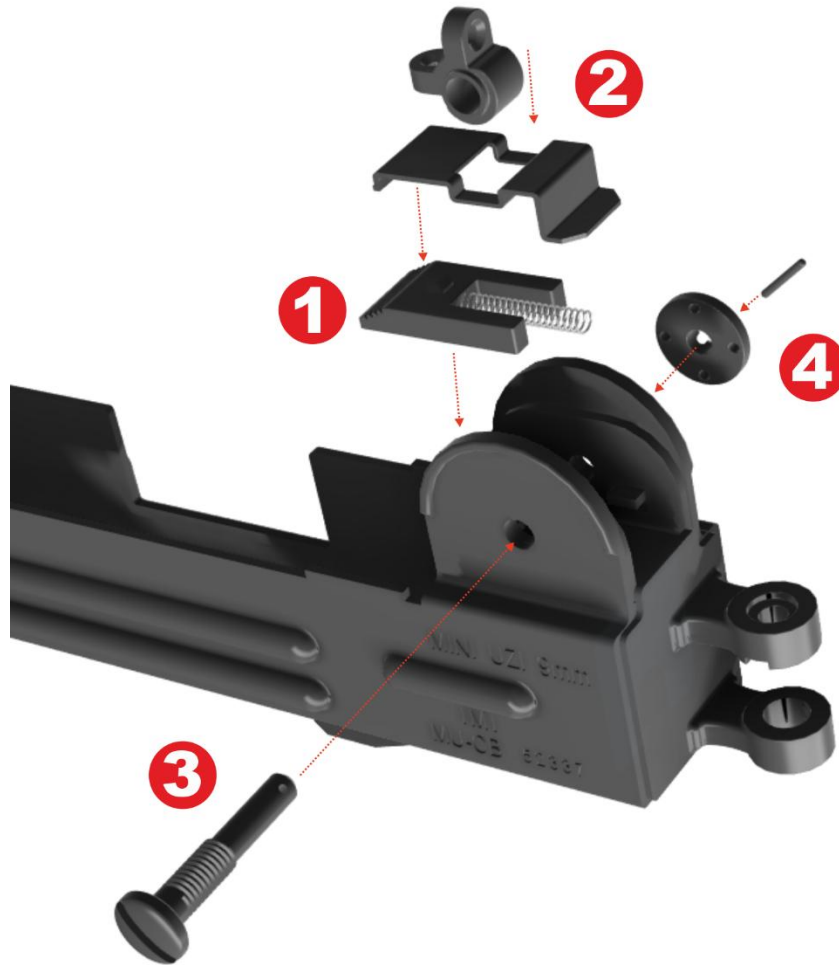
1. Fit the Trigger and Trigger Spring into the top of the Pistol Grip Body.
2. Secure the Trigger with the Trigger Pin.
3. Align the Magazine Catch and Magazine Catch Spring with the holes on the Pistol Grip Body.
4. Secure the Magazine Catch by sliding in the Magazine Catch Pin.
5. Fit the Sear Pin. This has no function other than cosmetic.

Pistol Grip Body Sub-Assembly 2



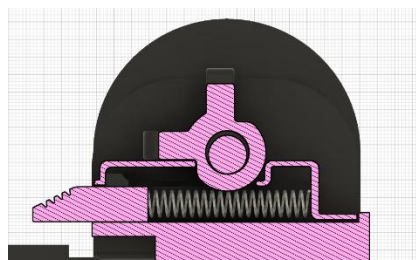
1. Fit Grip Left and Grip Right to the Pistol Grip Body ensuring that the Grip Safety Button and Grip Safety Button Spring are sandwiched in between.
2. Secure the grips with the grip bolts and nuts.
3. Glue Fire Selector Button to the Pistol Grip Body.

Receiver Assembly 1

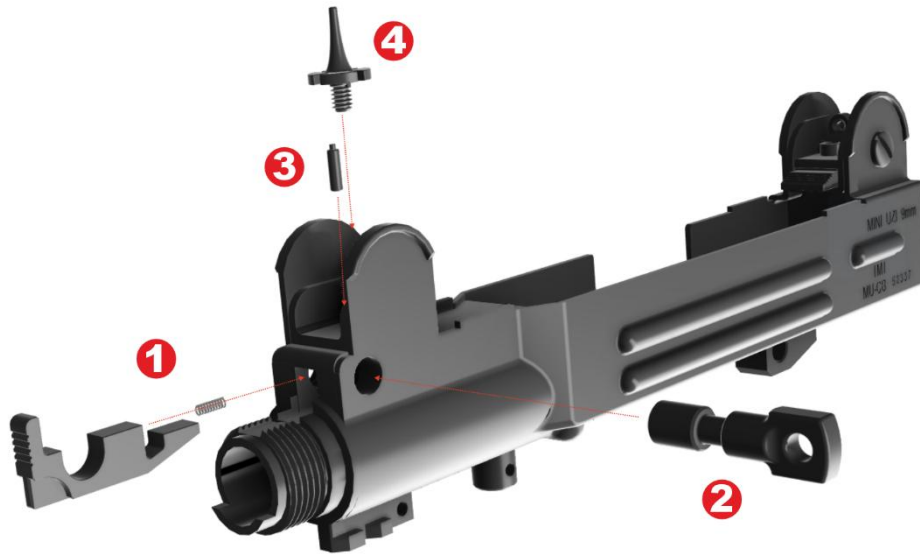


1. Place Cover catch Spring in the cutout in the Cover Catch. Lower this assembly into the top rear of the Receiver.
2. Sit the Rear Sight Spring over the top of the Cover Catch. Ensure that the lip at the front of the rear Sight Spring sits over the raised part of the Cover Catch and the Cover Catch Spring is retained within the rear of the Rear Sight Spring.
The Rear Sight sits on top of this with hole aligned with holes in the Receiver.
3. Insert the Rear Sight Axis to hold all components together. The Cover Catch should now be able to be pushed in towards the rear and allowed out again under spring pressure whilst being retained by the Rear Sight Spring.
4. Fit the Windage Drum over the end of the Rear Sight Axis and secure with the Windage Drum Pin.

The following sectional image shows how the Cover Catch is held in place by the Rear Sight Spring.

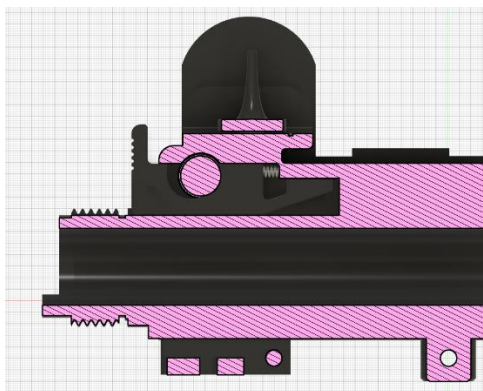


Receiver Assembly 2



1. Slide the Barrel Catch Spring into the hole in the Barrel Catch and slide this assembly into the front of the Receiver.
2. Whilst pushing the Barrel Catch in as far as it will travel against the spring, insert the Sling Swivel into the hole in the Receiver. Once you let go of the Barrel Catch this should hold the Sling Swivel in place.
3. Insert Front Sight Detent into the small hole in the top of the Receiver.
4. Push the Front Sight into the larger hole in the top of the Receiver. As the hole is not threaded you may need a spot of glue to secure.

The following sectional image shows how the Barrel Catch holds the Sling Swivel in place.



Receiver Cover Assembly

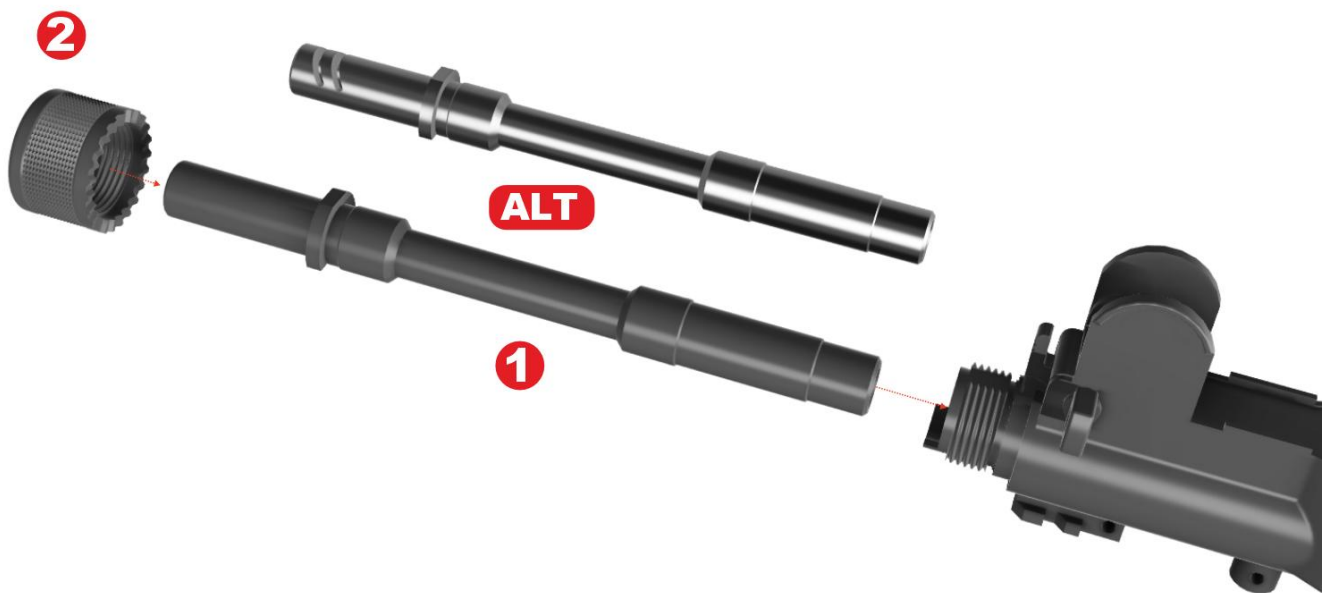


1. Secure the selecting cocking part by screwing the Cocking Knob screw through the part, then through the Slot Cover, then through the Receiver Cover and then into the Cocking Lug. These parts may need to be tapped to M4.

The cocking mechanism should be free to slide forwards and backwards.

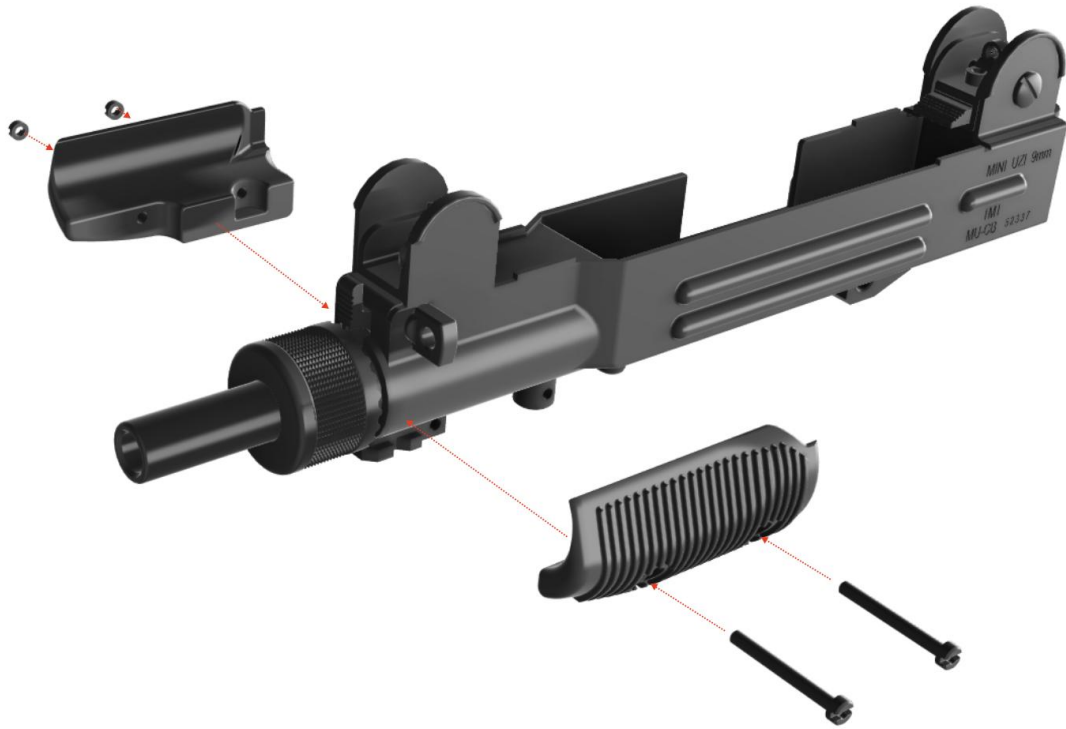
Note that the M3 bolt will protrude below the assembly as this engages the hole in the top of the Bolt in later assembly steps.

Barrel Assembly



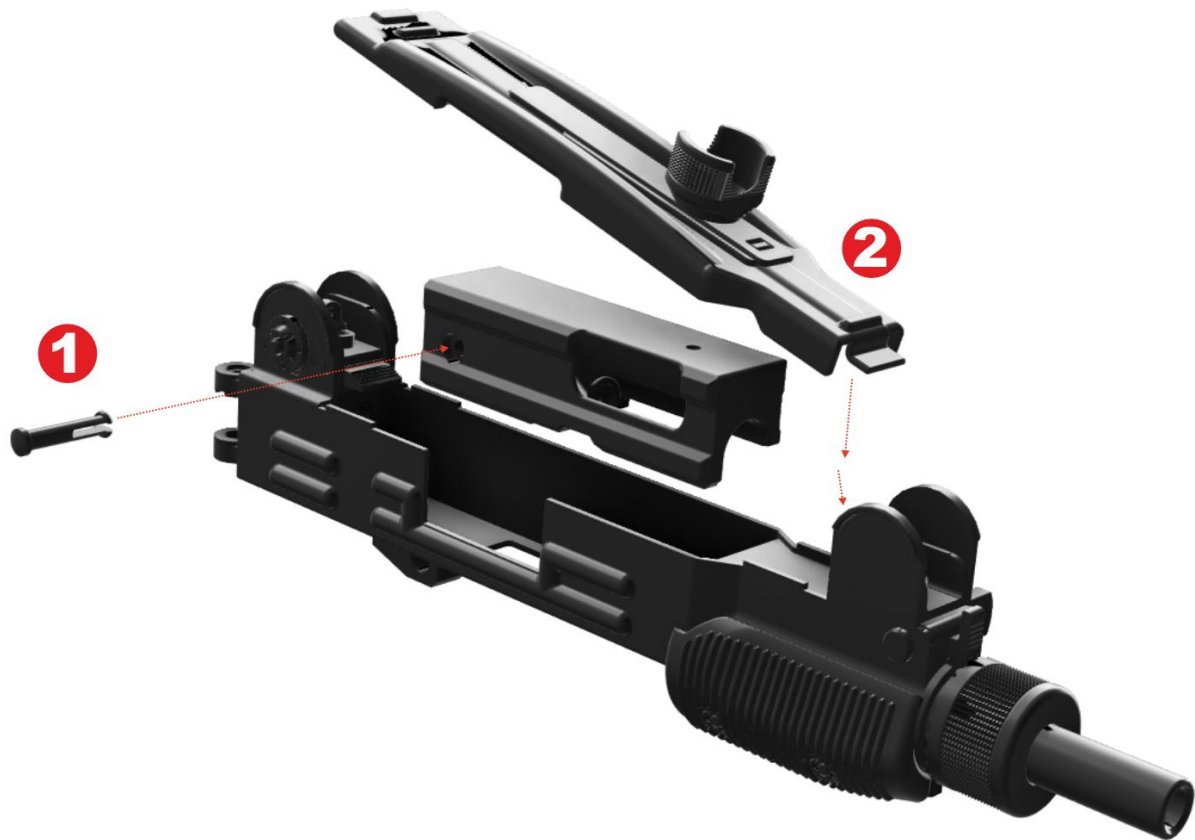
1. **ALT** Choose the Barrel or the Ported Barrel to suit your preference. Slide the selected barrel into the front of the Receiver. Note orientation where half cut on Barrel aligns with half cut in Receiver.
2. Secure the barrel by screwing on the Barrel Retaining Nut. NOTE: as you finish tightening this hold in the Barrel Catch and find a notch in the Barrel retaining Nut that locates with the Barrel Catch at such a point where the barrel is held in place but so is the Sling Swivel. i.e. the Barrel Catch should still be pushed forward by the spring thus still holding the Sling Swivel in place.

Handguard Assembly



1. Attach Handguard Left and Handguard Right to the Receiver using either the 3D printed handguard nuts and bolts or the hardware described in the Hardware List.

Bolt Assembly



1. Push Extractor Pin into Bolt. Slide Bolt into the recess in the top of the Receiver.
2. Fit the Receiver Cover assembly onto the top of the Receiver by tilting down the front and locating the lip into the recess in the front of the Receiver.
Then lower the rear onto the Receiver but ensure that the Cocking Knob Bolt fits into the hole on the top of the Receiver.
IMPORTANT: Slide back the Cover Catch until the Receiver Cover is fully down then slide it back out to lock the Receiver Cover in place.

Receiver and Pistol Grip Body Assembly



1. Fit the Pistol Grip Body assembly into the Receiver by locating the lip at the front with the recess in the Receiver. Set it flat against the underside of the Receiver.
2. Fit the Pistol Grip Pin through the Pistol Grip Body and the Receiver to lock everything together.

Final Assembly



1. Fit the magazine.

Folding Stock Assembly



1. Cocking Knob should already have been assembled from previous steps.
2. Insert the Folding Stock into the bracket on the rear of the UZI.
3. Insert Connecting Pin and Stock spring into the hinge from below.
4. Use circlip to secure top of Connecting Pin. You could also opt for the 3D printed Stock retaining Ring. If you have trouble attaching a circlip you could try and attach an M5 half nut to the top of the Connecting Pin. Use the nut to cut threads into the top of the pin before assembling.

Gallery

Ghost In The Shell Movie and Prop Images



Prop Photo Right In Briefcase



Prop Photo Left



Movie Still 1



Movie Still 2

Duplex Designs Model Renders



3D Model Renders Right and Left

Duplex Designs FDM 3D Printed Model



ACTUAL FDM PRINT



ACTUAL FDM PRINT



Duplex Designs
REALITY DUPLICATED

<https://duplexdesigns.co.uk>

support@duplexdesigns.co.uk

Issued: 13th June 2026

© 2026 Duplex Designs